
D-5000 Digital Audio Console

TECHNICAL MANUAL

 *Wheatstone Corporation*

600 Industrial Drive, New Bern, North Carolina, USA 28562

D-5000 Digital Audio Console Technical Manual - 1st Edition

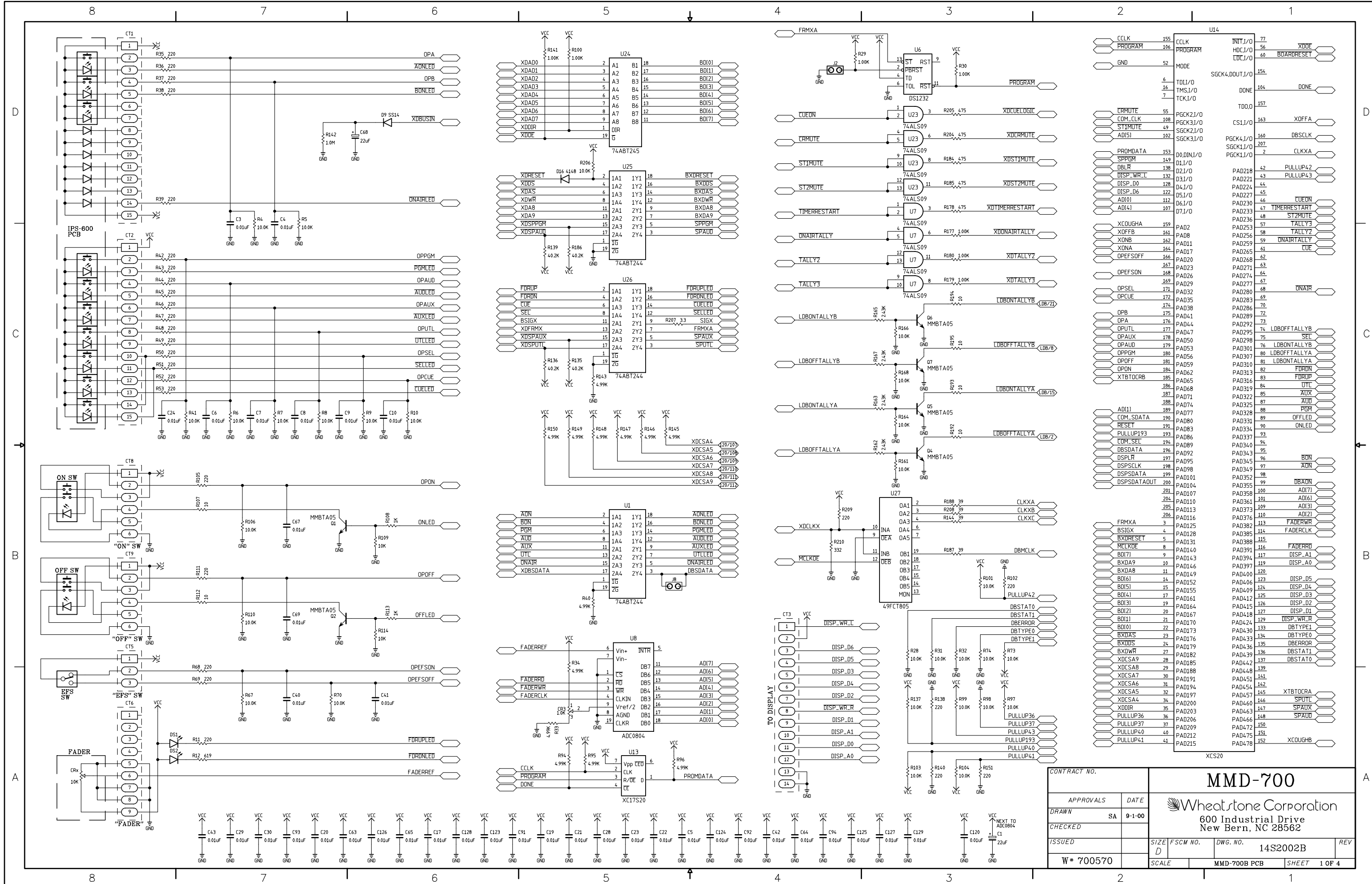
©2000 Wheatstone Corporation

WHEATSTONE CORPORATION
600 Industrial Drive
New Bern, North Carolina 28562
tel 252-638-7000 / fax 252-637-1285

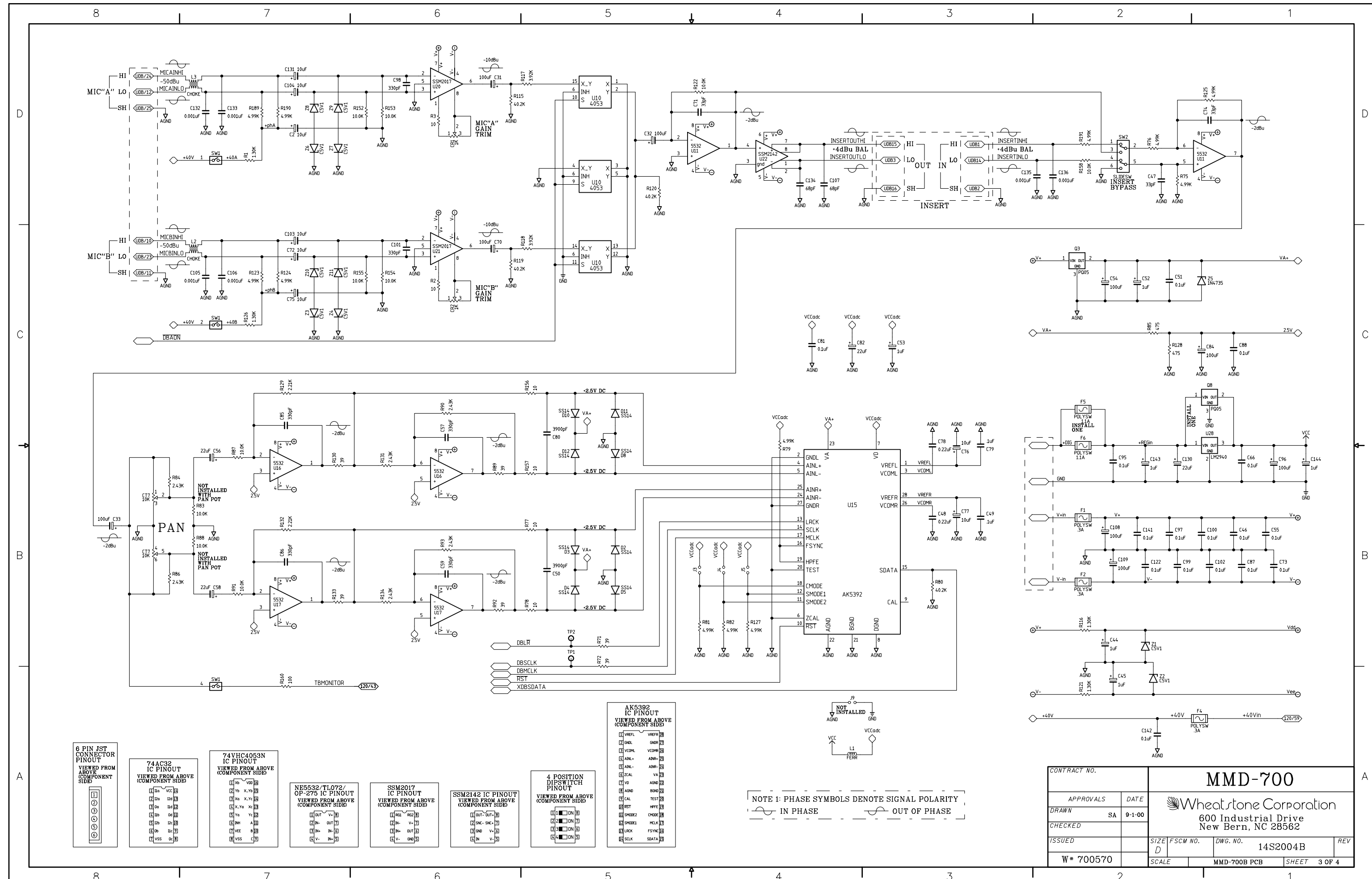
I/O Schematic Drawings

Chapter Contents

Mono Mic Input Module Schematic (MMD-700)	15-2
Stereo Line Input Module Schematic (SLD-600)	15-4
Digital Stereo Line Input Card Schematic (SRC-500)	15-5
Analog Stereo Line Input Card Schematic (SLADC-600)	15-6
Output Module Schematic (OMD-500)	15-7
Control Room Module Schematic (CRD-500)	15-8
Studio Control Module Schematic (SCD-500)	15-11
Digital Superphone I/O Card Schematic (SPND-500)	15-13
Analog Superphone I/O Card Schematic (SPNA-600)	15-14
Digital/Audio Line Select Rackmount Schematic (LSR-500)	15-15
Tape Remote Module Schematic (TRD-500)	15-17
Intercom Module Schematic (ICMD-500)	15-18
Analog Line Select Module Schematic (LSA-600)	15-19



MMD-700 Mono Mic Input Module Schematic -
Sheet 1 of 4



MMD-700 Mono Mic Input Module Schematic - Sheet 3 of 4

Page 5-5b

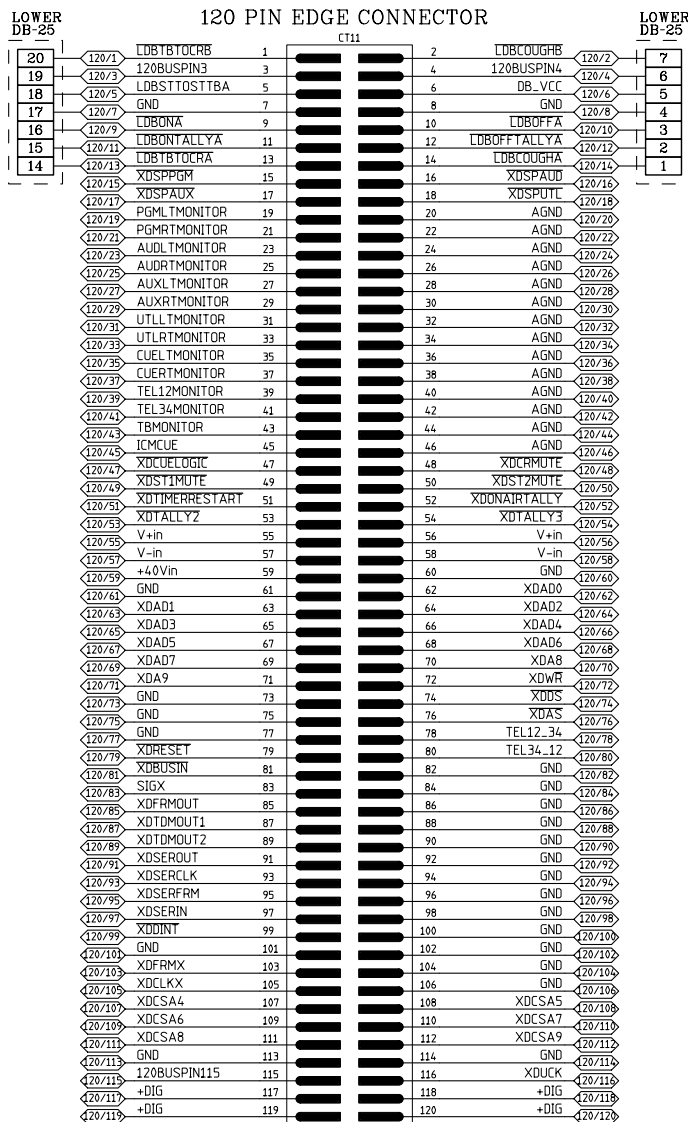
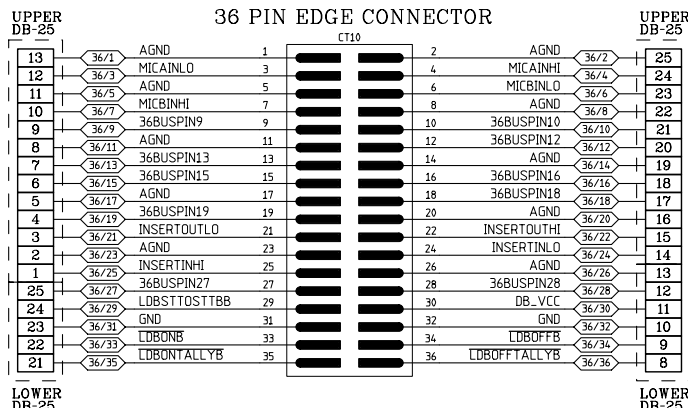
CONTRACT NO.		MMD-700	
APPROVALS	DATE	Wheatstone Corporation 600 Industrial Drive New Bern, NC 28562	
DRAWN	SA 9-1-00		
CHECKED		SIZE	REV
ISSUED		FSCM NO.	14S2004B
W# 700570		DWG. NO.	14S2004B
SCALE		MMD-700B PCB SHEET 3 OF 4	

A

B

C

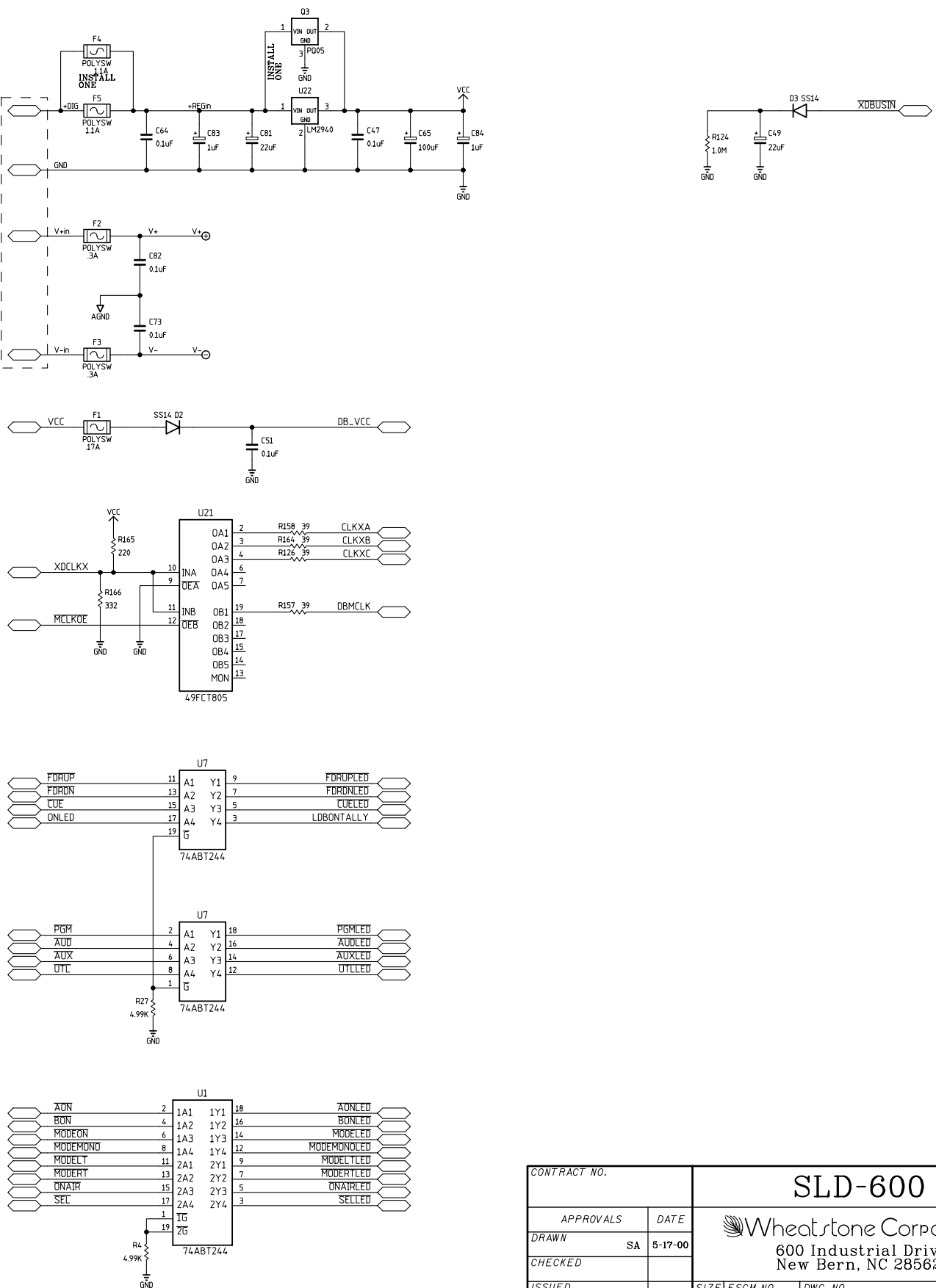
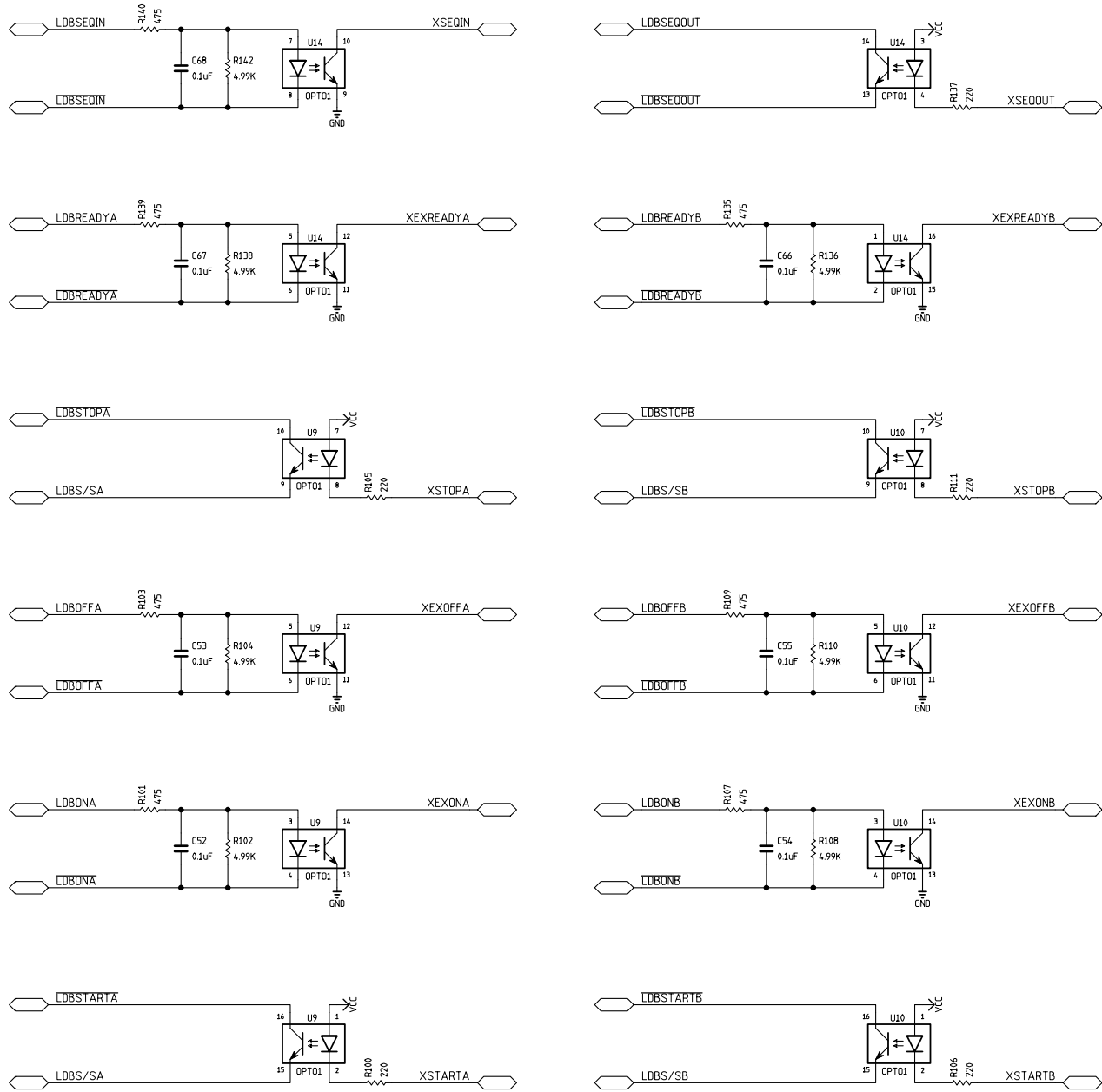
D




CONNECTORS BUSS CHART

CONTRACT NO.		MMD-700			
APPROVALS	DATE	Wheatstone Corporation 600 Industrial Drive New Bern, NC 28562			
DRAWN	SA 9-1-00				
CHECKED					
ISSUED		SIZE	FSCM NO.	DWG. NO.	REV
W# 700570		C		14S2005B	
		SCALE	MMD-700B PCB		SHEET 4 OF 4

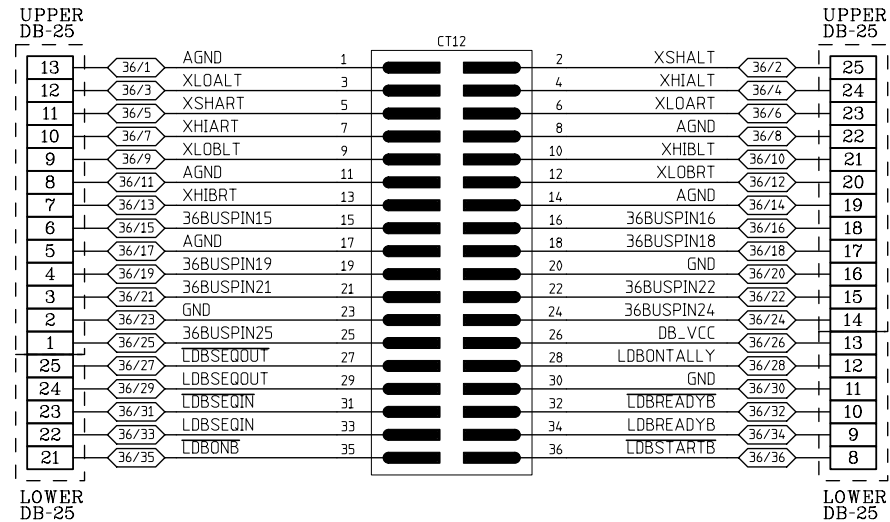
8 7 6 5 4 3 2 1



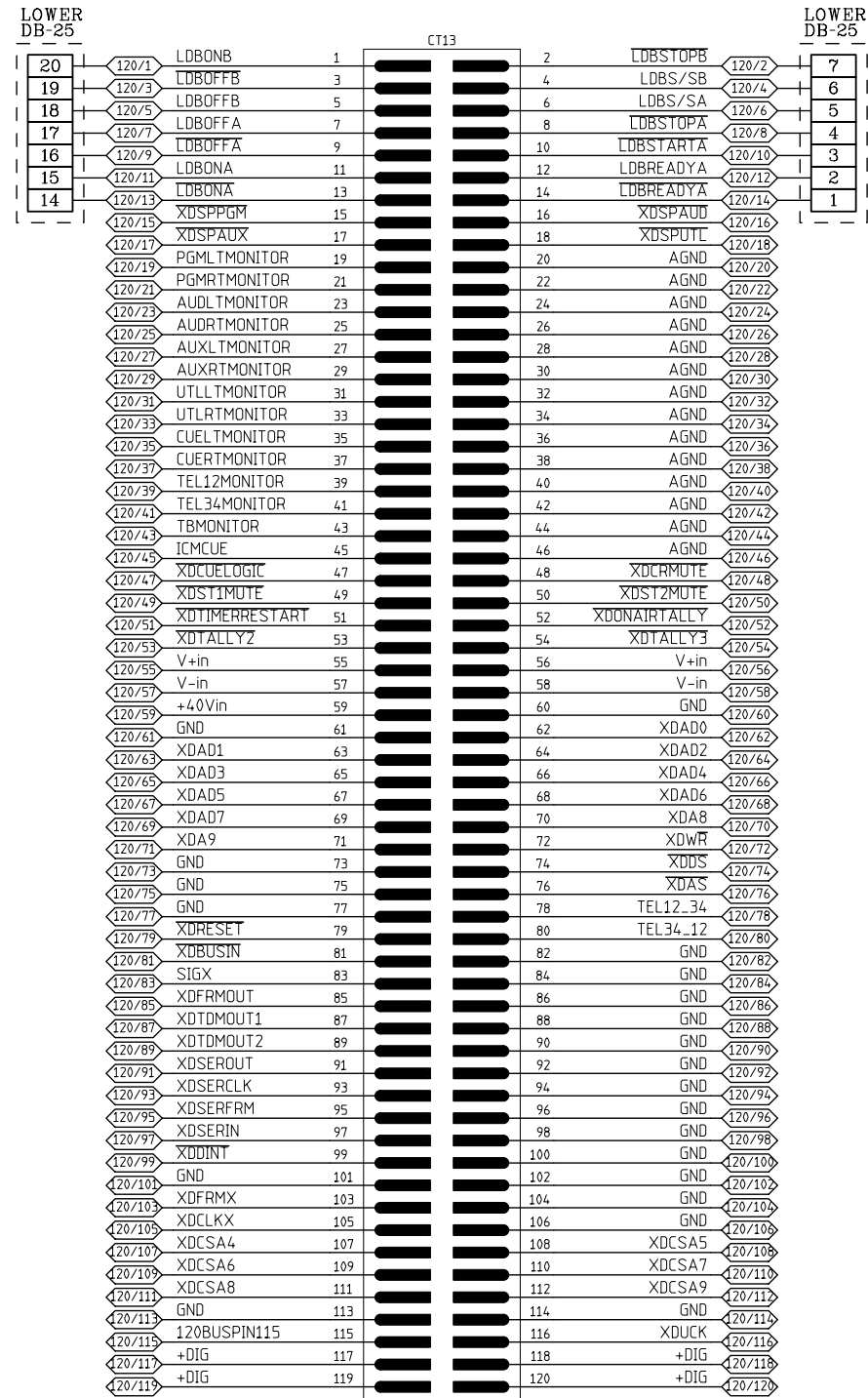
SLD-600 Stereo Line Input Module Schematic -
Sheet 3 of 4

CONTRACT NO.		SLD-600			
APPROVALS		DATE		 Wheatstone Corporation 600 Industrial Drive New Bern, NC 28562	
DRAWN		SA 5-17-00			
CHECKED					
ISSUED					
W# 700333		SIZE D	FSCM NO.	DWG. NO. 14S1004G	REV
		SCALE	SLD-600G PCB		SHEET 3 OF 4

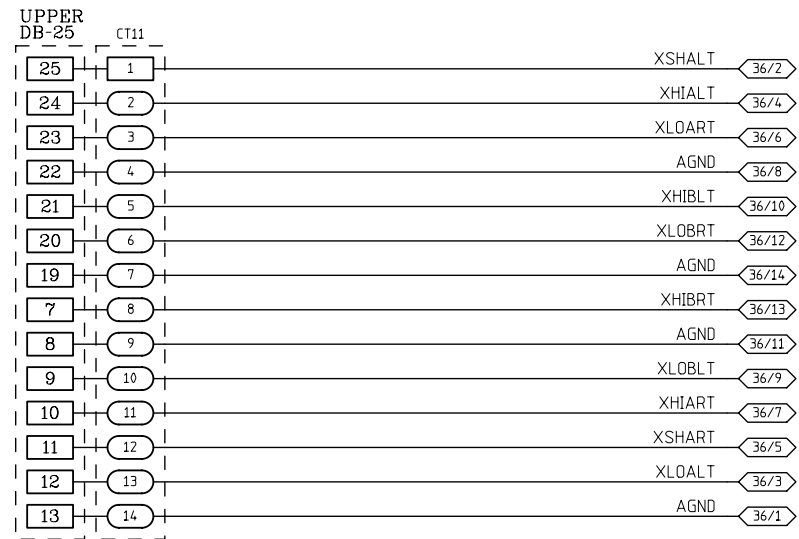
36 PIN EDGE CONNECTOR




120 PIN EDGE CONNECTOR

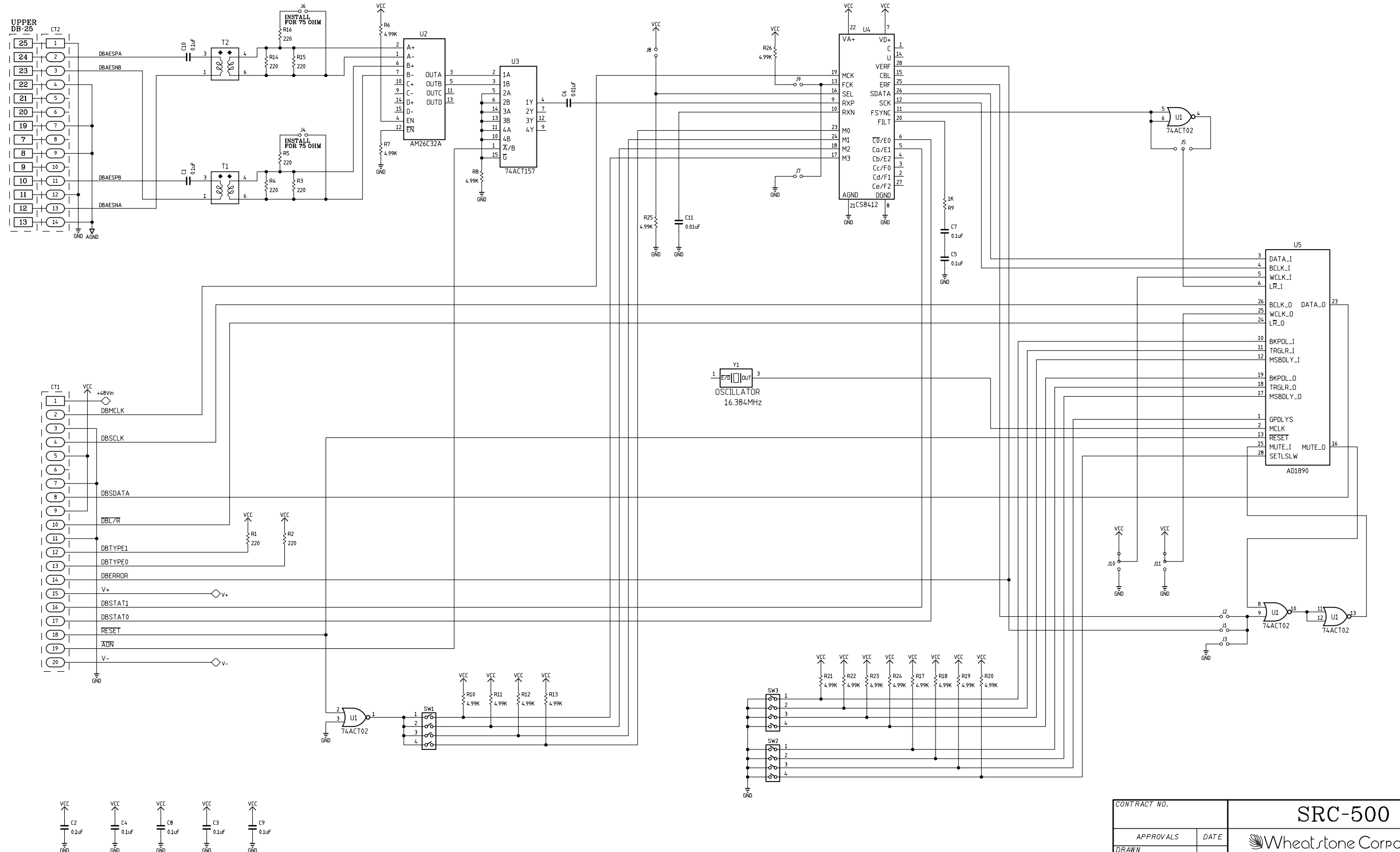


CONNECTORS
BUSS CHART




CONTRACT NO.		SLD-600			
APPROVALS	DATE	 Wheatstone Corporation 600 Industrial Drive New Bern, NC 28562			
DRAWN SA	5-17-00				
CHECKED					
ISSUED		SIZE C	FSCM NO.	DWG. NO. 14S1003G	REV -
W* 700333		SCALE	SLD-600G PCB	SHEET	4 OF 4

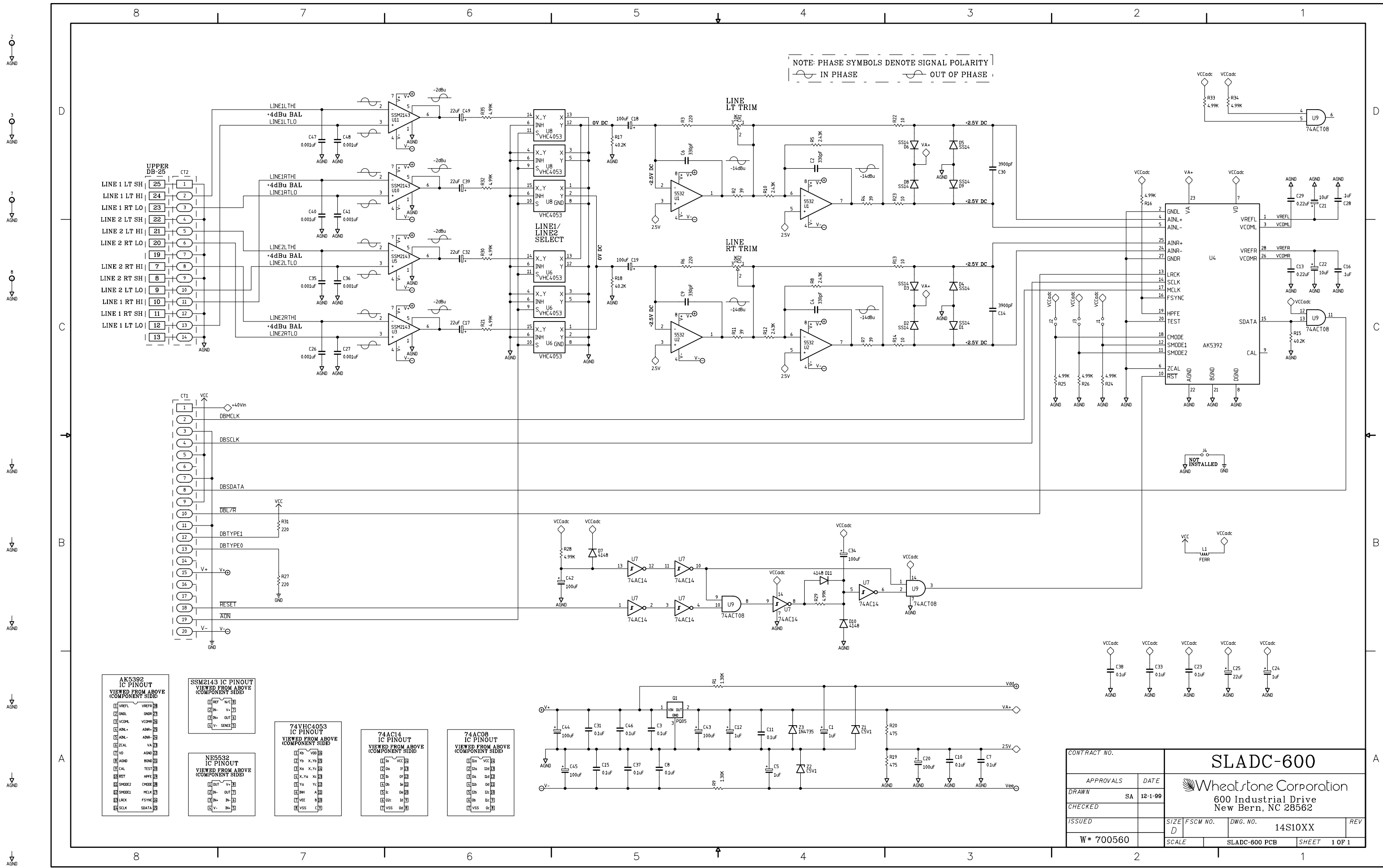
8 7 6 5 4 3 2 1



8 7 6 5 4 3 2 1

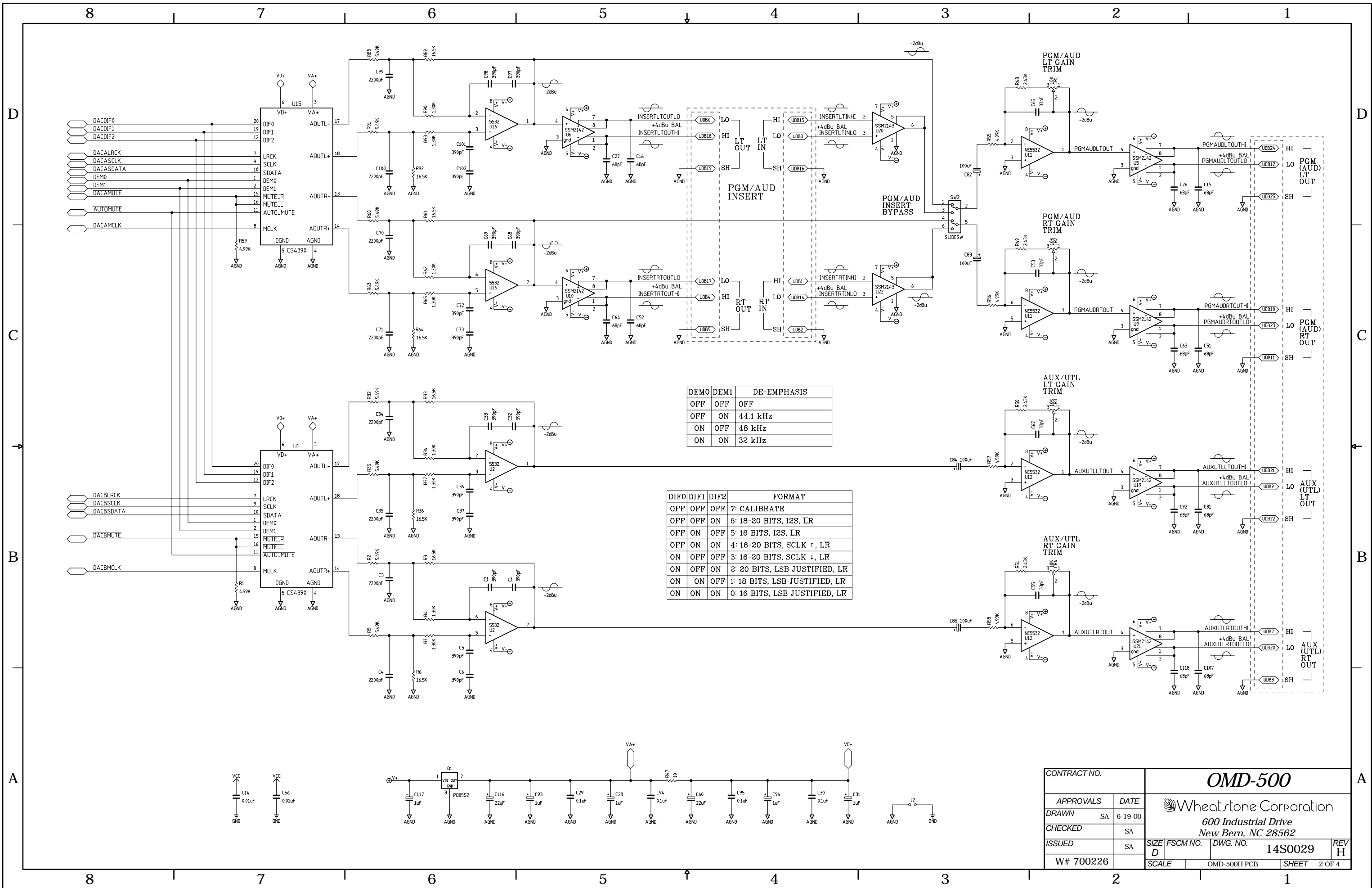
SLD-500 Input Module Schematic - Sheet 7 of 7

CONTRACT NO.		SRC-500			
APPROVALS	DATE	 Wheatstone Corporation 600 Industrial Drive New Bern, NC 28562			
DRAWN	SA 11-15-99				
CHECKED		SIZE	FSCM NO.	DWG. NO.	REV
ISSUED		D		14S0027B	
W # 700252		SCALE	SRC-500B PCB		SHEET 1 OF 1



SLD-600 Input Module Schematic - Sheet 6 of 6

CONTRACT NO.		SLADC-600			
APPROVALS	DATE	<div>Wheatstone Corporation</div> 600 Industrial Drive New Bern, NC 28562			
DRAWN	SA 12-1-99				
CHECKED		SIZE	FSCM NO.	DWG. NO.	REV
ISSUED		D		14S10XX	
W # 700560		SCALE	SLADC-600 PCB	SHEET	1 OF 1



A

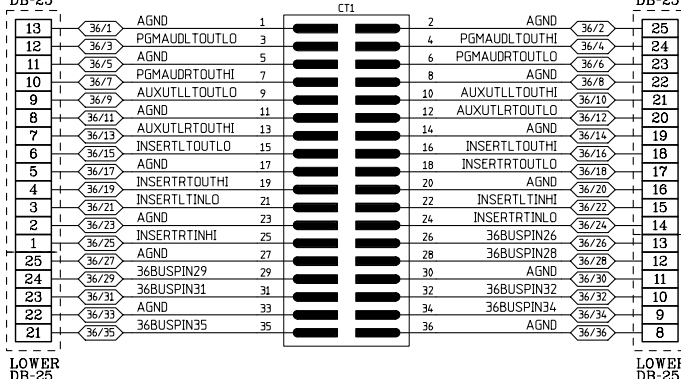
B

C

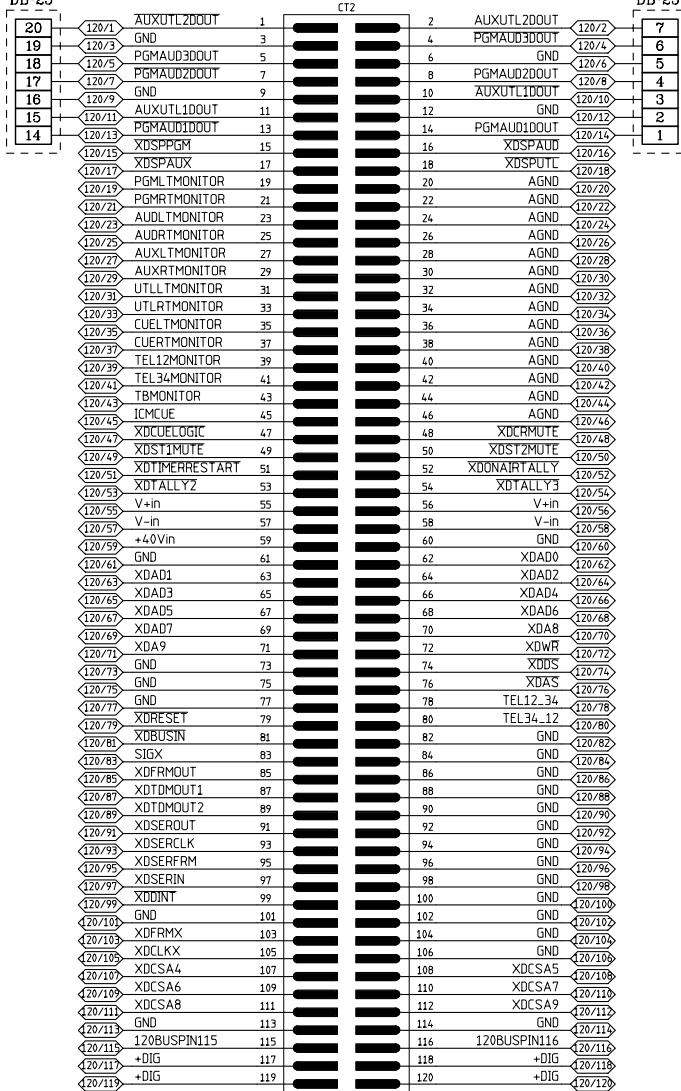
D

UPPER
DB-25

36 PIN EDGE CONNECTOR

UPPER
DB-25LOWER
DB-25LOWER
DB-25LOWER
DB-25

120 PIN EDGE CONNECTOR

LOWER
DB-25CONNECTORS
BUSS CHART

CONTRACT NO.

OMD-500

APPROVALS DATE

Wheatstone Corporation

DRAWN SA 6-19-00

600 Industrial Drive
New Bern, NC 28562

CHECKED SA

ISSUED SA

SIZE C FSCM NO. DWG. NO. 14S0030 REV H

W# 700226

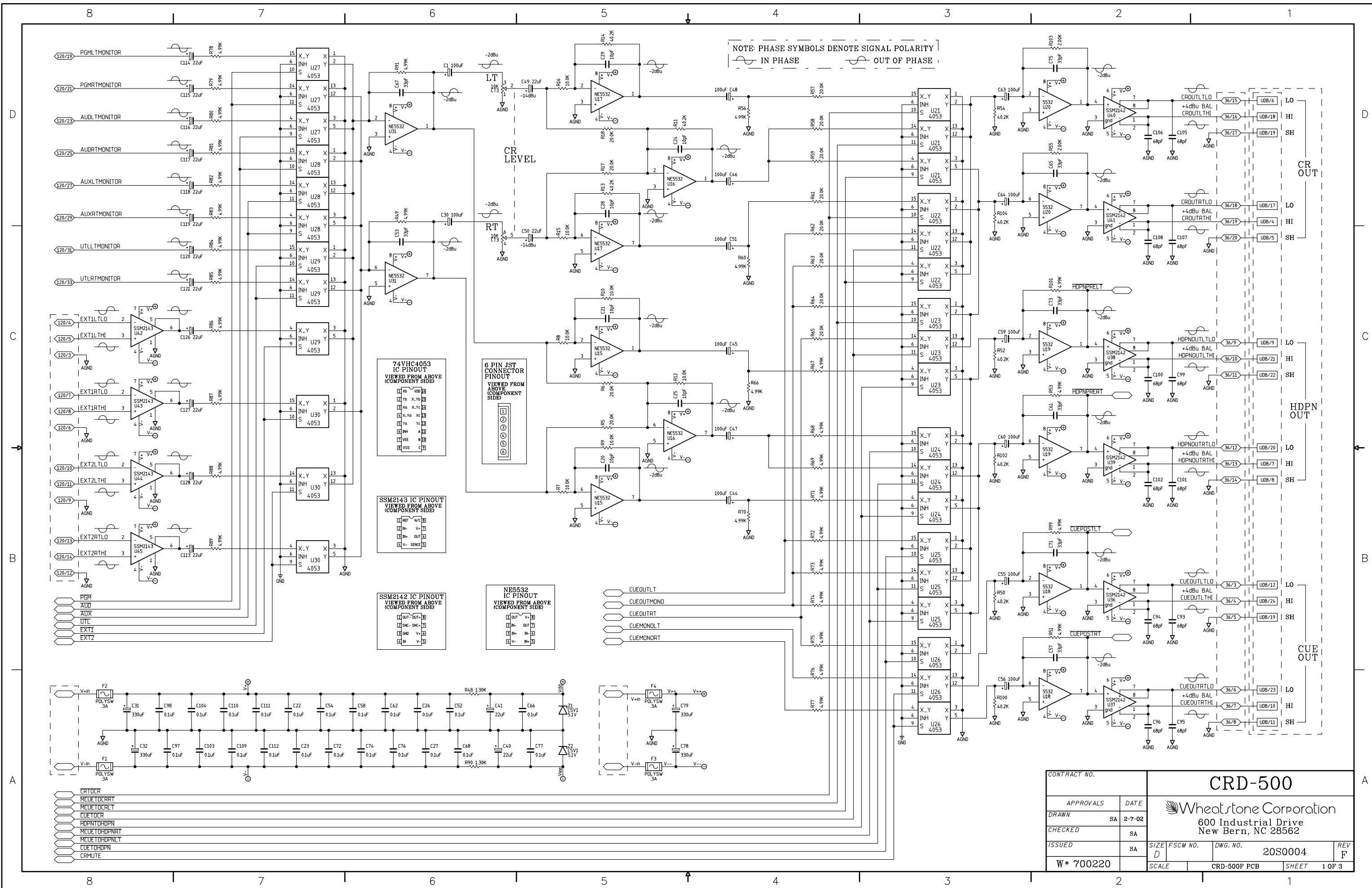
SCALE OMD-500H PCB SHEET 4 OF 4

A

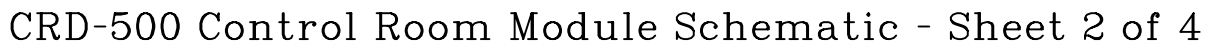
B

C

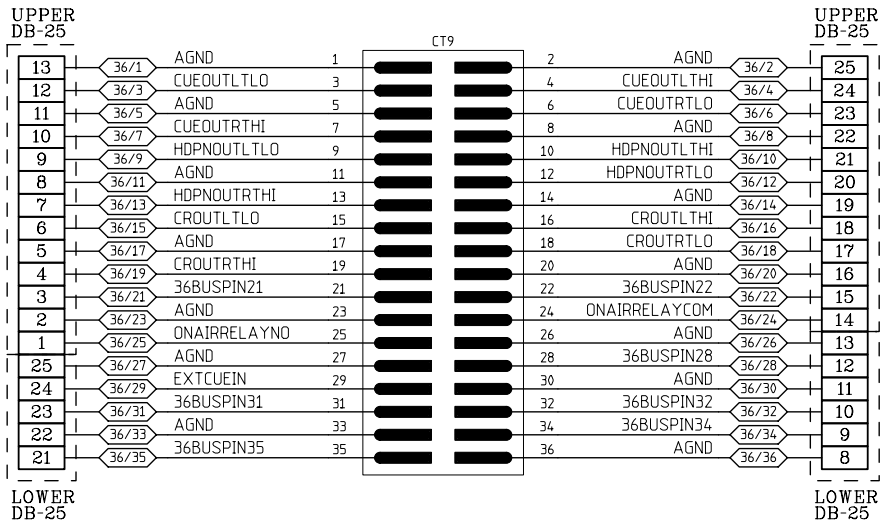
D



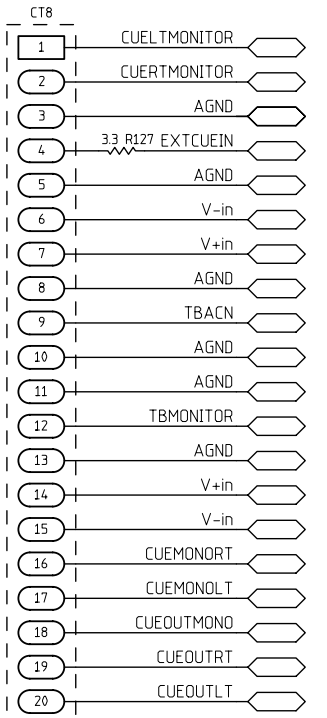
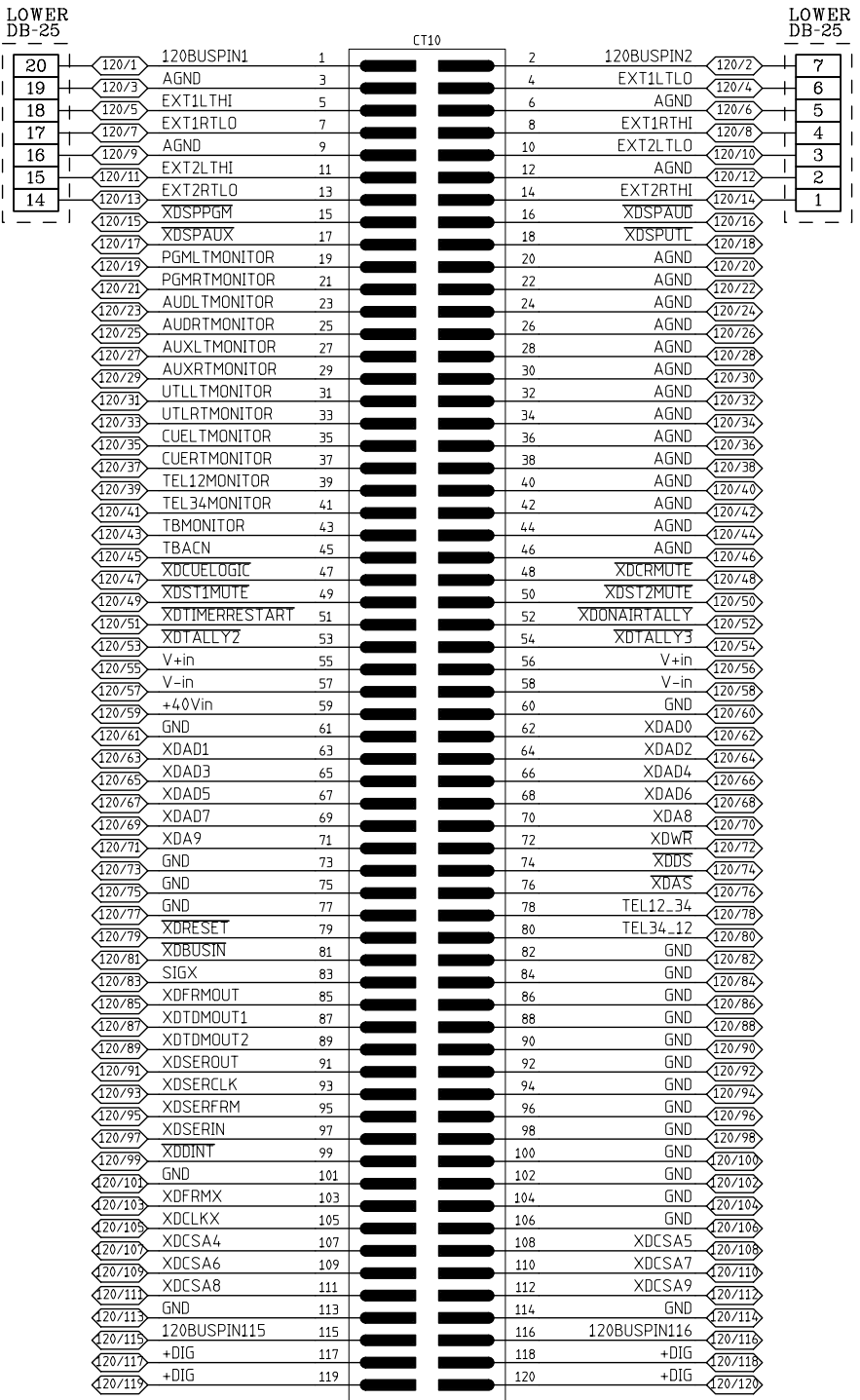
CRD-500 Control Room Module Schematic - Sheet 1 of 4



36 PIN EDGE CONNECTOR




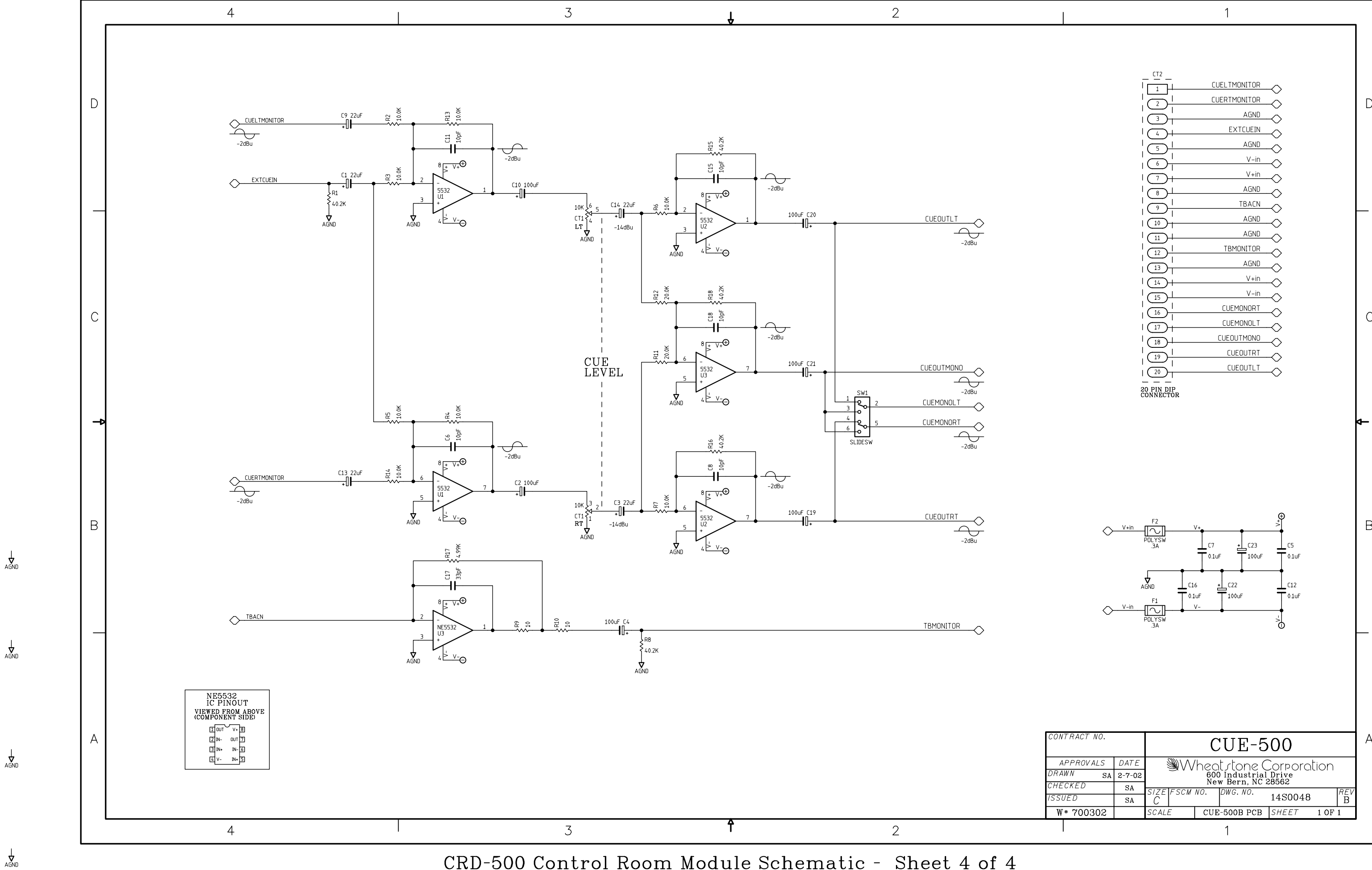
120 PIN EDGE CONNECTOR

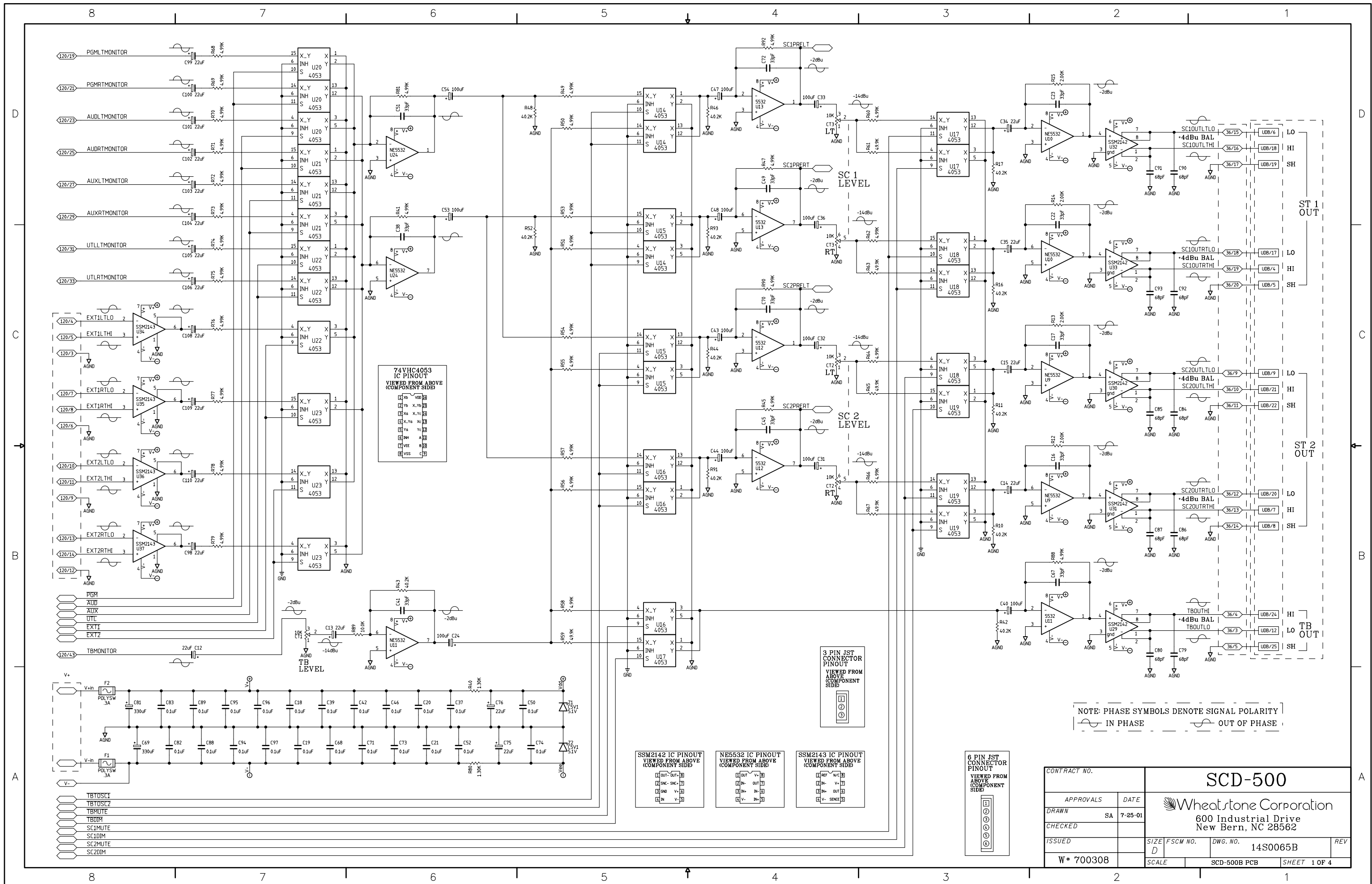


20 PIN DIP CONNECTOR

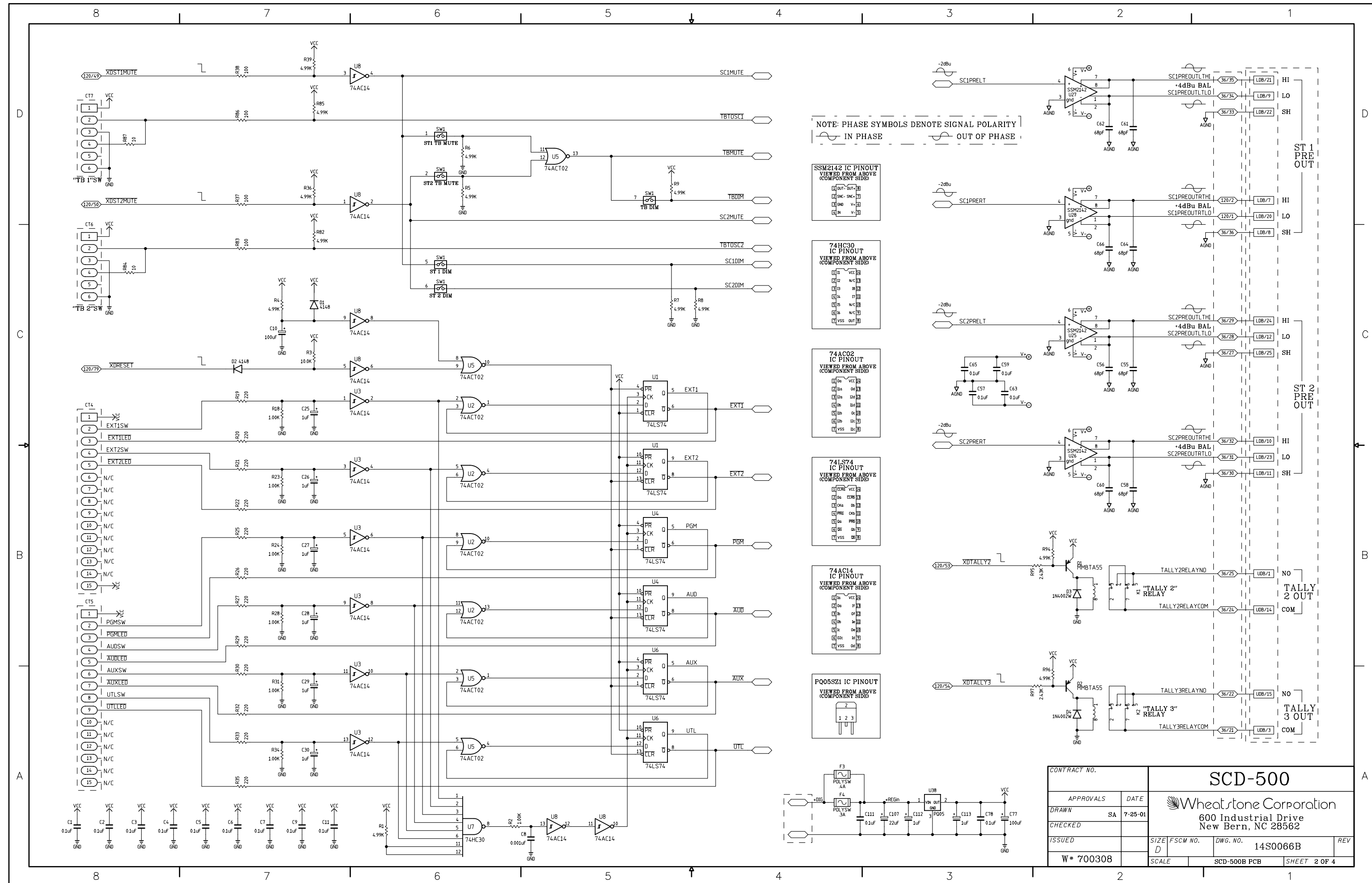
CONNECTORS
BUSS CHART

CONTRACT NO.		CRD-500			
APPROVALS	DATE	 Wheatstone Corporation 600 Industrial Drive New Bern, NC 28562			
DRAWN	SA 2-7-02				
CHECKED	SA				
ISSUED	SA	SIZE C	FSCM NO.	DWG. NO. 14S0016	REV F
W* 700220		SCALE	CRD-500F PCB	SHEET	3 OF 3



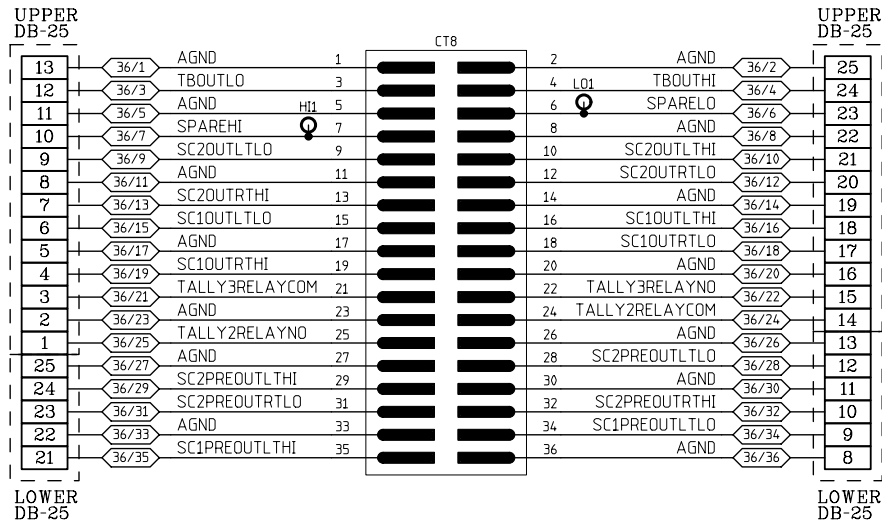


SCD-500 Studio Control Module Schematic -
Sheet 1 of 3

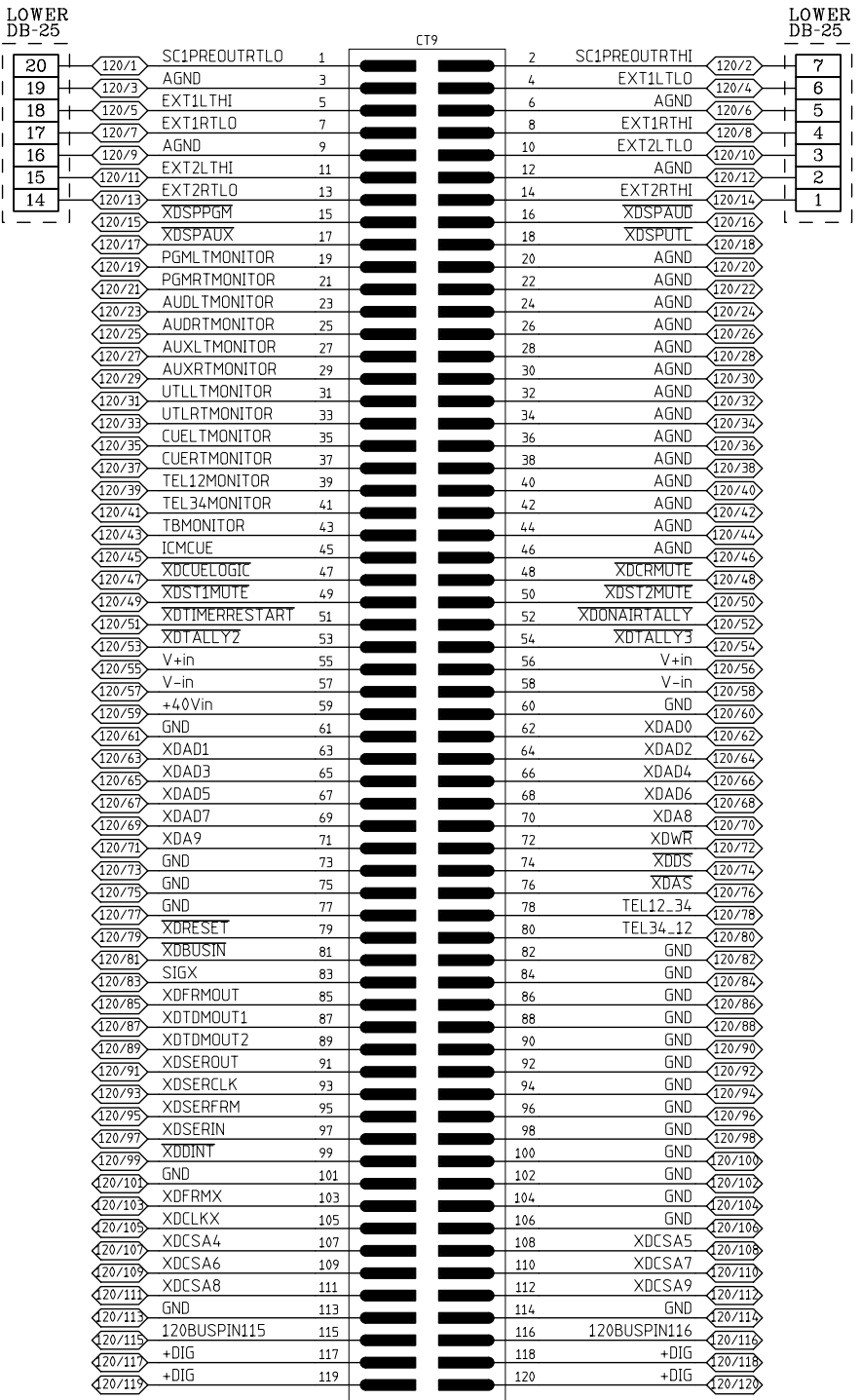


SCD-500 Studio Control Module Schematic - Sheet 2 of 3


36 PIN EDGE CONNECTOR

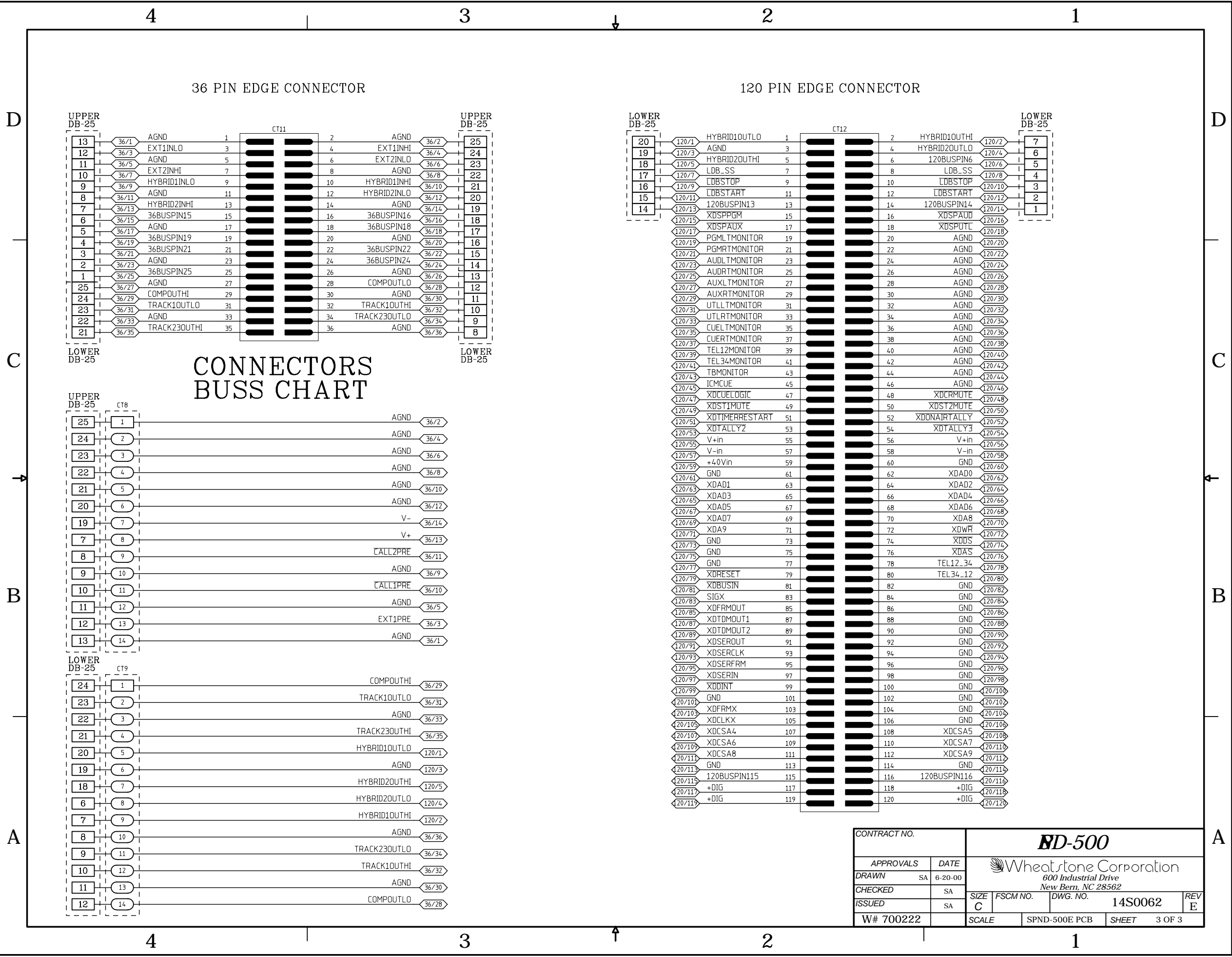


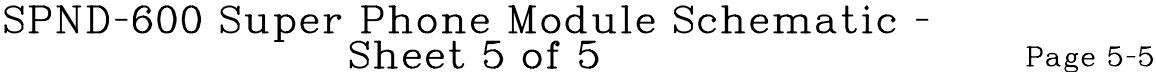
120 PIN EDGE CONNECTOR



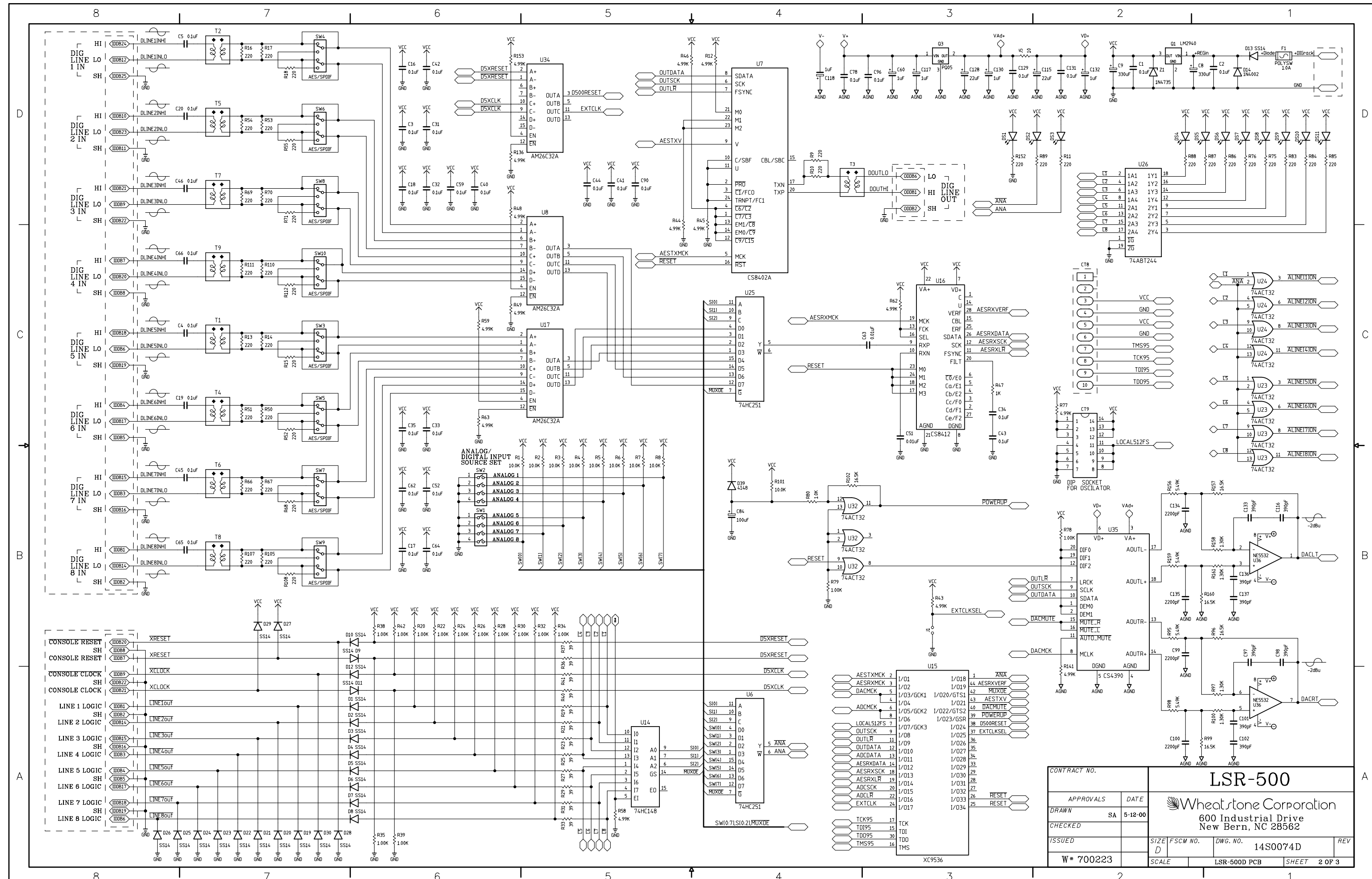
CONNECTORS
BUSS CHART

CONTRACT NO.		SCD-500			
APPROVALS	DATE	 Wheatstone Corporation 600 Industrial Drive New Bern, NC 28562			
DRAWN SA	7-25-01				
CHECKED		SIZE C	FSCM NO.	DWG. NO. 14S0067B	REV -
ISSUED		SCALE	SCD-500B PCB	SHEET	3 OF 4
W* 700308					



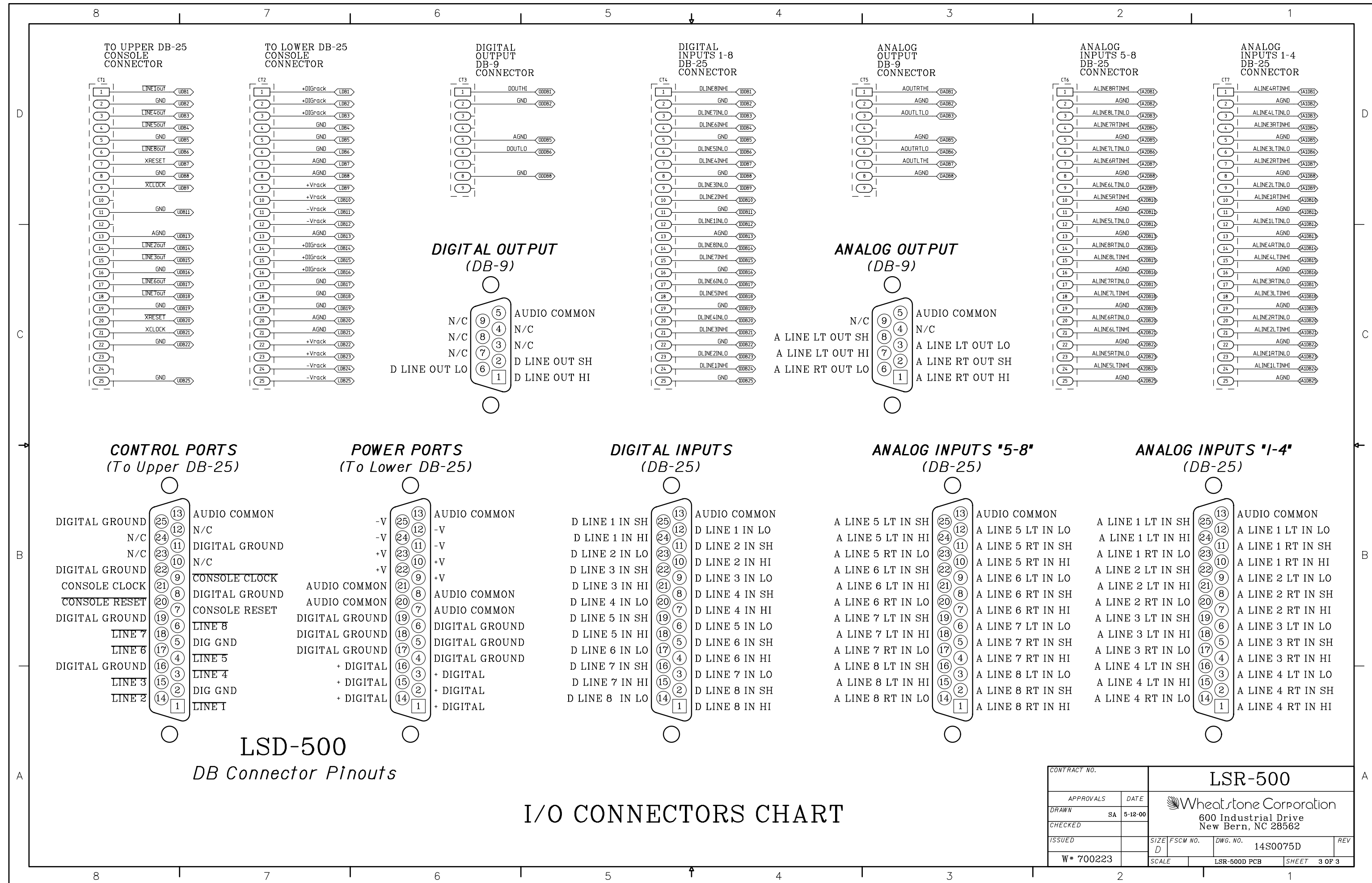


LSR-500 Digital/ Audio Line Select Rackmount
Schematic - Sheet 1 of 3




LSR-500 Digital/ Audio Line Select Rackmount
Schematic - Sheet 2 of 3

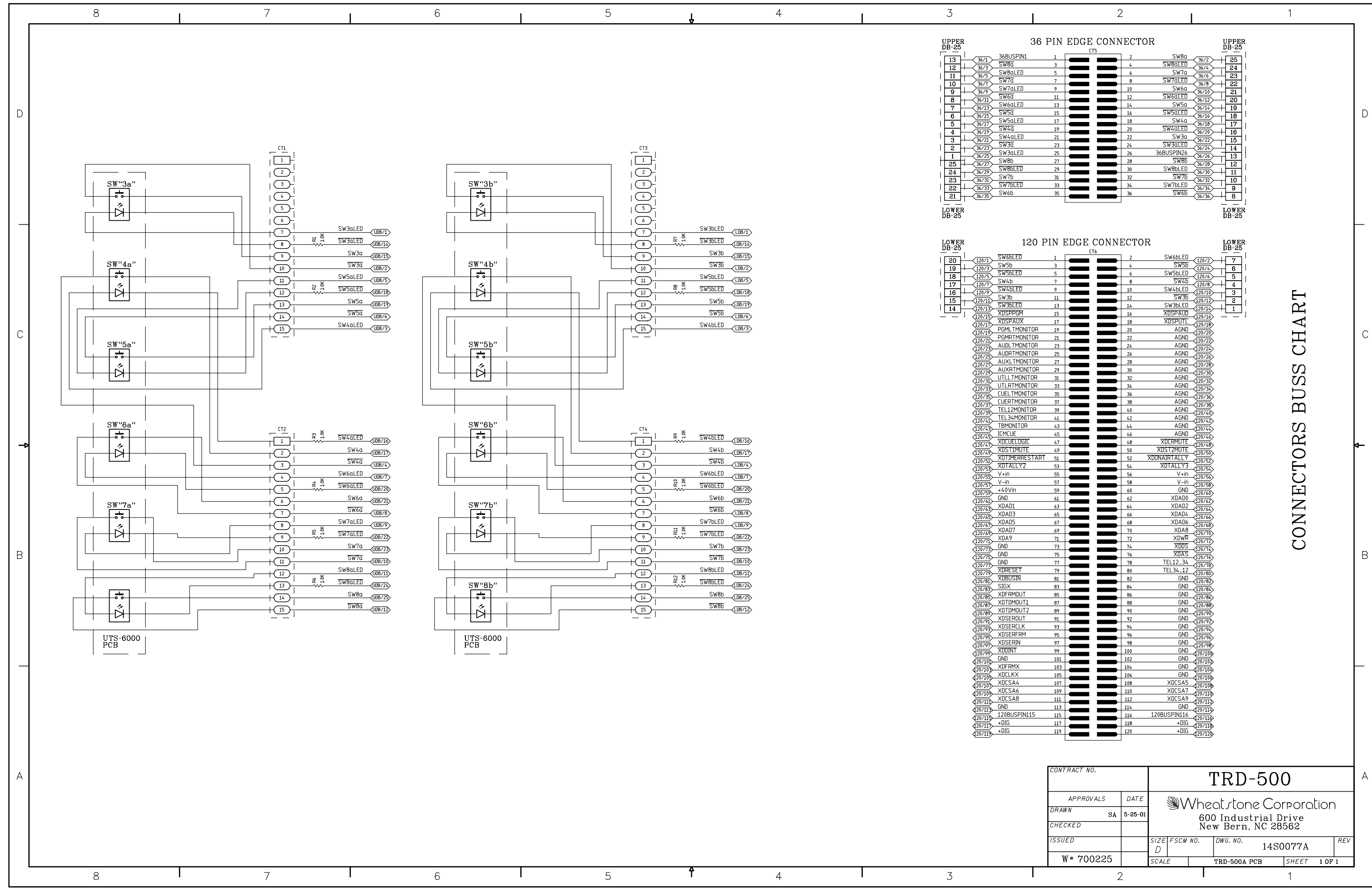
CONTRACT NO.		LSR-500	
APPROVALS	DATE	Wheatstone Corporation	
DRAWN	SA 5-12-00	600 Industrial Drive	
CHECKED		New Bern, NC 28562	
ISSUED		SIZE	FSCM NO.
W# 700223		D	14S0074D
		SCALE	LSR-500D PCB
		SHEET 2 OF 3	



LSD-500
DB Connector Pinouts


I/O CONNECTORS CHART

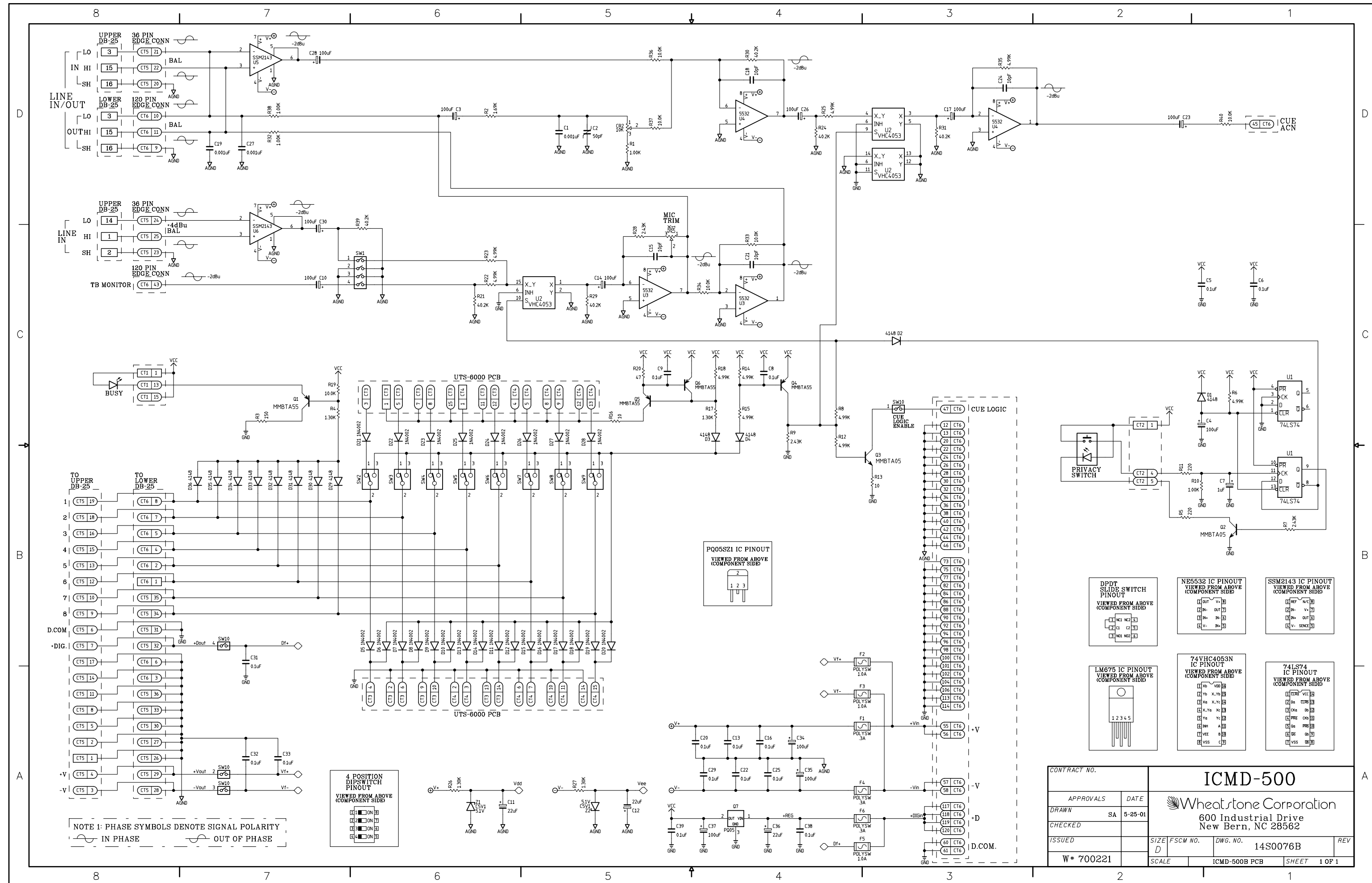
CONTRACT NO.		LSR-500						
APPROVALS		DATE		 Wheatstone Corporation 600 Industrial Drive New Bern, NC 28562				
DRAWN		SA	5-12-00					
CHECKED								
ISSUED				SIZE	FSCM NO.	DWG. NO.	14S0075D	REV
				D				
W* 700223				SCALE	LSR-500D PCB		SHEET	3 OF 3

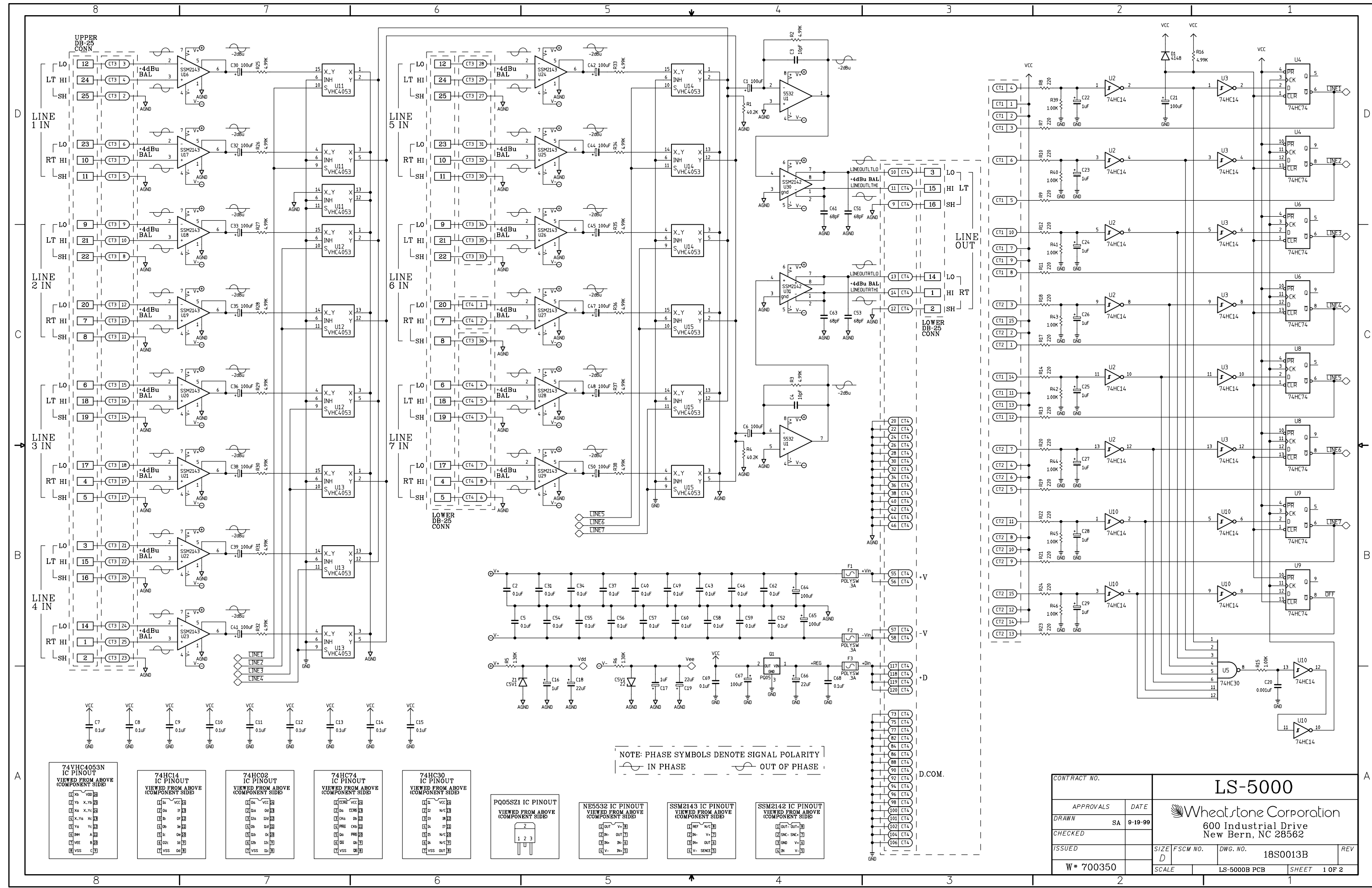


36 PIN EDGE CONNECTOR													
UPPER DB-25						UPPER DB-25							
			CT5										
13	36/1	36BUSPIN1	1		2	SW8a	36/2	25					
12	36/3	SW8aLED	3		4	SW8aLED	36/4	24					
11	36/5	SW8aLED	5		6	SW7a	36/6	23					
10	36/7	SW7aLED	7		8	SW7aLED	36/8	22					
9	36/9	SW7aLED	9		10	SW6a	36/10	21					
8	36/11	SW6a	11		12	SW6aLED	36/12	20					
7	36/13	SW6aLED	13		14	SW5a	36/14	19					
6	36/15	SW5a	15		16	SW5aLED	36/16	18					
5	36/17	SW5aLED	17		18	SW4a	36/18	17					
4	36/19	SW4a	19		20	SW4aLED	36/20	16					
3	36/21	SW4aLED	21		22	SW3a	36/22	15					
2	36/23	SW3a	23		24	SW3aLED	36/24	14					
1	36/25	SW3aLED	25		26	36BUSPIN26	36/26	13					
25	36/27	SW8b	27		28	SW8b	36/28	12					
24	36/29	SW8bLED	29		30	SW8bLED	36/30	11					
23	36/31	SW7b	31		32	SW7b	36/32	10					
22	36/33	SW7bLED	33		34	SW7bLED	36/34	9					
21	36/35	SW6b	35		36	SW6b	36/36	8					
LOWER DB-25						LOWER DB-25							

120 PIN EDGE CONNECTOR												LOWER DB-25			
LOWER DB-25				CT6								LOWER DB-25			
20	120/1	SW6bLED	1					2	SW6bLED	120/2		7			
19	120/3	SW5b	3					4	SW5b	120/4		6			
18	120/5	SW5bLED	5					6	SW5bLED	120/6		5			
17	120/7	SW4b	7					8	SW4b	120/8		4			
16	120/9	SW4bLED	9					10	SW4bLED	120/10		3			
15	120/11	SW3b	11					12	SW3b	120/12		2			
14	120/13	SW3bLED	13					14	SW3bLED	120/14		1			
	120/15	XDSPPGM	15					16	XDSPAUX	120/16					
	120/17	XDSPAUX	17					18	XDSPUTL	120/18					
	120/19	PGMLTMONITOR	19					20	AGND	120/20					
	120/21	PGMRTMONITOR	21					22	AGND	120/22					
	120/23	AUDLTMONITOR	23					24	AGND	120/24					
	120/25	AUDRTMONITOR	25					26	AGND	120/26					
	120/27	AUXLTMONITOR	27					28	AGND	120/28					
	120/29	AUXRTMONITOR	29					30	AGND	120/30					
	120/31	UTLLTMONITOR	31					32	AGND	120/32					
	120/33	UTLRTMONITOR	33					34	AGND	120/34					
	120/35	CUELTMONITOR	35					36	AGND	120/36					
	120/37	CUERTMONITOR	37					38	AGND	120/38					
	120/39	TEL12MONITOR	39					40	AGND	120/40					
	120/41	TEL34MONITOR	41					42	AGND	120/42					
	120/43	TBMONITOR	43					44	AGND	120/44					
	120/45	ICMCUE	45					46	AGND	120/46					
	120/47	XDCEUELOGIC	47					48	XDCRMUTE	120/48					
	120/49	XDS12MUTE	49					50	XDS2MUTE	120/50					
	120/51	XDTIMERRESTART	51					52	XDONAIRTALLY	120/52					
	120/53	XD1ALLY2	53					54	XD1ALLY3	120/54					
	120/55	V+in	55					56	V+in	120/56					
	120/57	V-in	57					58	V-in	120/58					
	120/59	+4.0Vin	59					60	GND	120/60					
	120/61	GND	61					62	XDA00	120/62					
	120/63	XDA01	63					64	XDA02	120/64					
	120/65	XDA03	65					66	XDA04	120/66					
	120/67	XDA05	67					68	XDA06	120/68					
	120/69	XDA07	69					70	XDA08	120/70					
	120/71	XDA9	71					72	XDA10	120/72					
	120/73	GND	73					74	XDA11	120/74					
	120/75	GND	75					76	XDA12	120/76					
	120/77	GND	77					78	TEL12_34	120/78					
	120/79	XDRESET	79					80	TEL34_12	120/80					
	120/81	XDBUSIN	81					82	GND	120/82					
	120/83	SIGX	83					84	GND	120/84					
	120/85	XDFRMOUT	85					86	GND	120/86					
	120/87	XDTOMOUT1	87					88	GND	120/88					
	120/89	XDTOMOUT2	89					90	GND	120/90					
	120/91	XDSEROUT	91					92	GND	120/92					
	120/93	XDSERCLK	93					94	GND	120/94					
	120/95	XDSERFRM	95					96	GND	120/96					
	120/97	XDSERIN	97					98	GND	120/98					
	120/99	XDDINT	99					100	GND	120/100					
	120/101	GND	101					102	GND	120/102					
	120/103	XDFRMX	103					104	GND	120/104					
	120/105	XDCLKX	105					106	GND	120/106					
	120/107	XDSCA4	107					108	XDSCA5	120/108					
	120/109	XDSCA6	109					110	XDSCA7	120/110					
	120/111	XDSCA8	111					112	XDSCA9	120/112					
	120/113	GND	113					114	GND	120/114					
	120/115	120BUSPIN115	115					116	120BUSPIN116	120/116					
	120/117	+DIG	117					118	+DIG	120/118					
	120/119	+DIG	119					120	+DIG	120/120					

CONTRACT NO.		TRD-500			
APPROVALS	DATE	 Wheatstone Corporation 600 Industrial Drive New Bern, NC 28562			
DRAWN	SA 5-25-01				
CHECKED		SIZE	FSCM NO.	DWG. NO.	REV
ISSUED		D		14S0077A	
W# 700225		SCALE	TRD-500A PCB		SHEET 1 OF 1





LS-5000 Line Select Module Schematic - Sheet 1 of 1

CONTRACT NO.		LS-5000	
APPROVALS	DATE	Wheatstone Corporation 600 Industrial Drive New Bern, NC 28562	
DRAWN	SA 9-19-99		
CHECKED		SIZE	FSCM NO.
ISSUED		DWG. NO.	18S0013B
W# 700350		SCALE	LS-5000B PCB
		SHEET	1 OF 2